

# TM3957 Touchpad



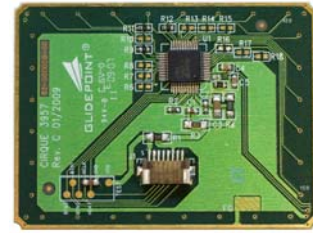
Our TM3957 touchpad is designed for use as a low power embedded PS/2® input device. It is similar in specification to the TM3957, but ideal for sensing through a thicker overlay or plastic. Its dimensions are based upon the industry standard for notebook computer pointing devices, making it ideal for integration into a wide variety of products where space is constrained. We also offer custom overlays to match your design requirements.

## applications

- Wireless Keyboards
- Battery powered devices
- Remote controls
- Digital lifestyle players
- GPS devices
- Portable instrumentation
- Laptops
- Industrial Panels

## features

- Industry-standard notebook computer size
- PS/2 (8-pin FFC connector) compatibility
- Voltage: 3V ± 10%
- Low power consumption
- Advanced power management with active, idle, sleep, and shut-down modes
- Easy product integration due to thin, lightweight design
- No maintenance required – Sealable design is immune to moisture, dust and abuse
- Superior navigation and high responsiveness
- Windows®-compatible embedded features mean no additional drivers needed



Using our patented GlidePoint® technology, the TM3957 is immune to moisture, allowing it to function properly even with water droplets present on the touchpad's sensing surface. In battery operated environments, the power consumption of the TM3957 is reduced with an active power management system, which automatically adjusts to user actions – automatic management of idle, sleep and shutdown modes.

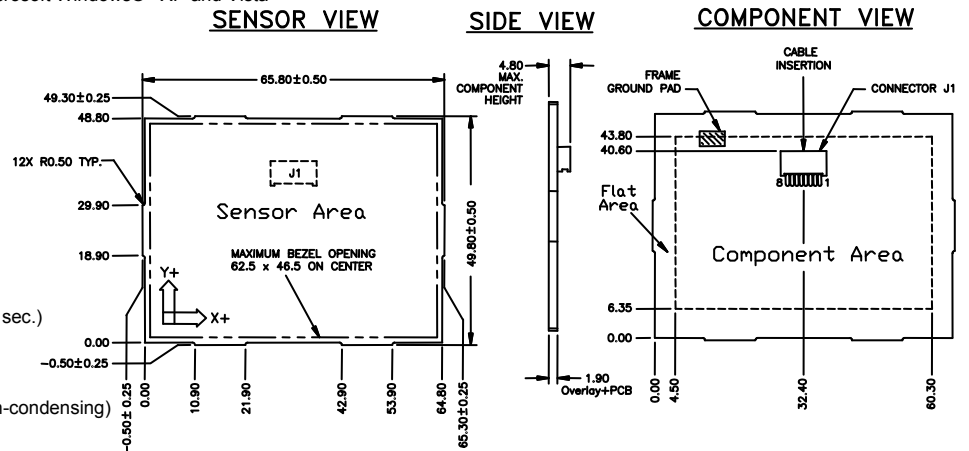
The TM3957 is fully compatible with standard Windows® mouse drivers. No additional driver is required to activate many of its advanced features. Hardware-configurable options on the module allow for taps (function as left-button clicks), corner-taps (function as right-button clicks), vertical and horizontal scroll (functions as mouse scroll wheel) and more, depending on the specific application.

**Interface** .....PS/2 with 8-pin FFC connector  
**Operating Systems** ..... Microsoft Windows®  
 Cirque Drivers available for Microsoft Windows® XP and Vista  
**Button Support** .....Three (3) mechanical buttons  
**Sensor Overlay** .....Multiple options available

### Physical Parameters

**Width** .....65.80 mm ± 0.15 mm  
**Height** .....49.80 mm ± 0.15 mm  
**Thickness** .....5.00 mm ± 0.15 mm  
 (with all components)  
**Weight** .....< 14 g  
**Active Sensing Area** .....62.50 x 46.50 mm ± 0.15 mm  
**Voltage** .....3.0 v ± 15%  
**Current** .....3.0 mA (active – tracking touch)  
 1.5 mA (idle – no touch present)  
 50 µA (sleep – no touch after ~5 sec.)  
 10 µA (shutdown)  
**Operating Temperature** .....-40° to 85° Celsius

**Operating Humidity** .....5% to 95% relative humidity (non-condensing)  
**Storage Temperature** .....-55° to +150° Celsius  
**ESD** .....15 kV when properly mounted in bezel  
**Environmental** .....EMI tolerant and manufactured RoHS compliant  
**Accessories** ..... 8-pin FFC cable available upon request  
 Mounting bracket – part no. PK20-M



NOTE: Dimensions are in millimeters. Unless otherwise indicated, all dimensional tolerances are ±0.15.

Our knowledgeable and helpful sales team is ready to answer all of your question. Please call toll-free 1-800-GLIDE-75 or visit [www.cirque.com](http://www.cirque.com)



## CIRQUE CORPORATION

Input Solutions At Your Fingertips  
 © 2006-2009 TM3957 Rev. G

2463 South 3850 West, Suite A, Salt Lake City, Utah 84120 U.S.A.  
 Phone: (801) 467-1100 • Fax: (801) 467-0208 • [www.cirque.com](http://www.cirque.com)