



INSTALLATION GUIDE

Cirque Smart Cat^{PRO}
Cirque Smart Cat[®]
Cirque Easy Cat[®]



DESKTOP PRODUCT - PART NUMBERING SCHEME

Product	Interface	Color	Model
Easy Cat	PS2	White	GP160P-0311
		Black	GP160P-0321
	Serial	White	GP160S-0311
		Black	GP160S-0321
	USB	White	GP160U-0311
		Black	GP160U-0321
Smart Cat	PS2	White	GP410P-5011
		Black	GP410P-5021
	USB	White	GP410U-5011
		Black	GP410U-5021
Smart Cat PRO	PS2	White	GP415P-5311
		Black	GP415P-5321
	USB	White	GP415U-5311
		Black	GP415U-5321

TABLE OF CONTENTS

1.0 SYSTEM REQUIREMENTS	1
HARDWARE REQUIREMENTS	1
SOFTWARE REQUIREMENTS	1
2.0 INSTALLATION INSTRUCTIONS	1
CONNECTING YOUR TOUCHPAD TO THE COMPUTER	1
BASIC FUNCTIONS	2
INSTALLING YOUR CIRQUE GLIDEPOINT® DRIVER SOFTWARE	2
3.0 USING YOUR CIRQUE GLIDEPOINT® TOUCHPAD (All Models)	3
BASIC FUNCTIONS	3
4.0 ADVANCED FEATURES	4
PRODUCT FEATURES	4
5.0 CUSTOMIZING YOUR TOUCHPAD FEATURES (All Models)	5
USING THE GLIDEPOINT CONTROL CENTER	5
6.0 CUSTOMER SERVICE	5
TROUBLESHOOTING	5
FREQUENTLY ASKED QUESTIONS	6
CUSTOMER SERVICE ASSISTANCE	6
NO RISK 30-DAY TRIAL	7
WARRANTY INFORMATION	7
FCC REGULATORY NOTICE	7

Congratulations on your purchase of a Cirque GlidePoint® touchpad. We hope you enjoy using your Cirque Smart Cat PRO®, Cirque Smart Cat® or Cirque Easy Cat®. Please take a moment to fill out the following information for your future reference.

Model Number _____

Serial Number _____

Date of Purchase _____

Where Purchased _____

Windows® Version Vista XP 2000 98 95 NT 4
Or Mac

Type of Connection USB PS/2 Serial

1.0 SYSTEM REQUIREMENTS

HARDWARE REQUIREMENTS

The Cirque Smart Cat PRO®, Cirque Smart Cat® and Cirque Easy Cat® touchpads require a PC-compatible computer. USB versions require a PC-compatible computer with available USB port.

SOFTWARE REQUIREMENTS

Cirque's GlidePoint® touchpads operate as a standard mouse on the PC platform and require no additional software for basic functions.

The Cirque GlidePoint® driver software adds additional features and control to the touchpad. The GlidePoint® driver is only available for the Windows® operating systems. Look up your operating system and connection type in the following table to determine the version of the GlidePoint® driver software you will need.

🍏 The USB version of the Cirque Easy Cat® also runs on Apple® Macintosh® computers with available USB ports.

	USB/PS2	Serial
Microsoft Windows XP, XP64, Vista, Vista 64	3.5	2.6
Microsoft Windows 2000	3.3.2	2.6
Microsoft Windows 98	2.6	
Microsoft Windows 95/NT4	1.08	

Driver version 3.5 is available on the CD included with your touchpad. Versions 3.3.2, 2.6, and 1.08 are available online at www.cirque.com.

2.0 INSTALLATION INSTRUCTIONS

CONNECTING YOUR TOUCHPAD TO THE COMPUTER

USB

- 1) Turn your computer on and start Windows.
- 2) Attach the USB connector to your computer.
- 3) If you see the "New Hardware Found" dialog box after connecting the touchpad, follow the prompts (insert your Windows CD if prompted) to install a standard HID compliant mouse.
- 4) Test the touchpad; it should operate with your existing drivers.



🍏 For Macintosh® installation (Cirque Easy Cat® only)

- 1) Turn your computer on.
 - 2) Attach the USB connector to your computer. Your Macintosh® should detect the touchpad immediately when you plug it in.
- Please note: Cirque Smart Cat® and Cirque Smart Cat PRO® will not function as designed on the Macintosh® system. Third party software for Macintosh® OS 8.5 or later is available for the Cirque EasyCat®.

PS/2

- 1) Turn the power to your computer off.
- 2) Attach the PS/2 adapter to your computer



NOTE: Because the PS/2 ports for both touchpad and keyboard may appear identical, look for an icon or description next to each port on your computer to identify which to use.

- 3) Turn your computer on and start Windows. If you see the “New Hardware Found” dialog box after Windows starts, select CANCEL and continue with the next step.
- 4) Test the touchpad; it should operate with your existing drivers.

Serial

- 1) Turn the power to your computer off.
- 2) Attach the serial adapter to your computer



- 3) Turn your computer on and start Windows. If you see the “New Hardware Found” dialog box after Windows starts, select CANCEL and continue with the next step.
- 4) Test the touchpad; it should operate with your existing drivers.

BASIC FUNCTIONS

Upon installation, the touchpad allows you to tap, right-tap, drag and highlight without the use of a Cirque driver. The Glide Extend® virtual edge extender and the wheel mouse scrolling feature are also available.

To use additional custom options and advanced scroll and zoom capabilities you must install the Cirque Glidepoint® driver software contained on your Cirque GlidePoint® software CD or available by download from www.cirque.com.

INSTALLING YOUR CIRQUE GLIDEPOINT® DRIVER SOFTWARE

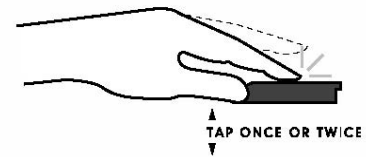
- 1) Insert the Cirque GlidePoint® software CD into your CD-ROM.
- 2) If the AutoRun feature does not launch the Windows Installer, select RUN from the START menu and type D:\setup (where d is the drive letter of your CD-ROM)
- 3) Follow the prompts as they appear on your screen. You will have to accept the license agreement and choose the type of touchpad, USB or PS/2. Click next after each screen to advance through the wizard.
- 4) Re-boot your computer if prompted to do so.
- 5) Open the GlidePoint Control Center and adjust the touchpad settings to suit your needs. (For more information on customizing your touchpad, refer to “How can I customize my touchpad settings?” on page 6)

3.0 USING YOUR CIRQUE GLIDEPOINT® TOUCHPAD (All Models)

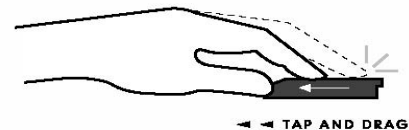
BASIC FUNCTIONS

Unlike the mouse or trackball, Cirque GlidePoint® touchpads require little arm and wrist motion and no finger pressure. Like all pointing devices, you may take a short time to become familiar with the operation of your touchpad. Yet you will soon find that using your finger is a more natural and intuitive way to control your computer. Simply glide your finger across the surface of the pad to move the cursor and tap your finger to “click”. It’s easy!

- **To click**, lightly and quickly tap the surface of the pad once. Or, press the left button once.
- **To double-click**, tap twice on the pad or click the left button twice. Remember, the touchpad responds to a very light, crisp tap.
- **To right-click** for sub-menus, tap the tap zone in the upper right corner of the touchpad or click the right button once.



- **To drag, draw, or highlight**, double-tap rapidly and hold your finger down on the second tap, then glide to move. You may also hold the left button as you glide your finger.



- **GlideExtend®**. To drag further than the pad surface, lift and reposition your finger after reaching the textured edge. GlideExtend® will virtually eliminate the edge of the pad while you drag. In other words, if you are dragging an item and you reach the textured edge, GlideExtend® will hold the drag function active for three seconds while you reposition and complete the drag. To shut off GlideExtend® earlier than three seconds, simply tap or click a button.
- **To scroll**, place your finger down the right edge of the touchpad and glide up or down.

For Macintosh® OS X, right-click submenu access and wheel-mouse scrolling are supported. Older OS versions require the installation of third party software named *USB Overdrive. If interested in these features, you may download the latest version at www.usboverdrive.com.

*Cirque does not support USB overdrive and is not responsible for any problems related to or caused by the software. Contact USB Overdrive for technical assistance and support regarding the software.

4.0 ADVANCED FEATURES

PRODUCT FEATURES

Your Cirque touchpad represents the latest in “capacitive touch” technology. All products are designed to give you the highest level of performance and include advanced features not available from the standard mouse. (For more information on customizing your touchpad, refer to “How can I customize my touchpad settings?” on page 6.) The following table summarizes the features available in your product.

Features	Easy Cat®	Smart Cat®	Smart Cat PRO®
Standard size touchpad	X		
Extra-large size touchpad		X	X
Middle mouse button		X	X
Vertical scroll	X	X	X
Left / Right mouse buttons	X	X	X
Taps	X	X	X
Taps & Drag	X	X	X
Horizontal scroll	X	X	X
Power scroll	X	X	X
CirQular scroll	X	X	X
Zoom control	X	X	X
Back / Forward page control	X	X	X
Touchpad rotation	X	X	X
Tapping control	X	X	X
Cursor movement control	X	X	X
Number of programmable mechanical buttons	2	3	3
Number of programmable touchpad zones	1	1	1
Number of programmable hot buttons	0	0	4

Please Note: Features within the shaded area require the use of the Cirque driver software.

SCROLLING HORIZONTALLY & VERTICALLY (All Models)

Scrolling will allow you to move around in a scrollable document, similar to clicking on the scroll arrows or using the PAGE UP or PAGE DOWN keys.

ZOOMING (All Models)

This allows you to increase or decrease the view size of your document in most Microsoft® Windows® applications.

BACK / FORWARD PAGE CONTROL (All Models)

You can use Cirque’s back/forward feature to activate the back and forward controls of various applications such as Microsoft® Internet Explorer® and Netscape Navigator®.

PROGRAMMABLE BUTTONS AND TAP ZONES

Touchpad buttons and tap zones can be programmed to launch applications, open files or execute specific Windows® functions. A tap zone and mechanical buttons are available on all touchpad models. The Cirque Smart Cat PRO® has four additional programmable buttons (labeled A through D) on the touchpad surface.

5.0 CUSTOMIZING YOUR TOUCHPAD FEATURES (All Models)

USING THE GLIDEPOINT CONTROL CENTER

Your GlidePoint® touchpad settings, such as speed or button assignments, may be customized through the GlidePoint Control Center. The GlidePoint Control Center is only available if you have installed the Cirque GlidePoint® driver software (see “*Installing your Cirque GlidePoint® driver software*” pg. 2.)

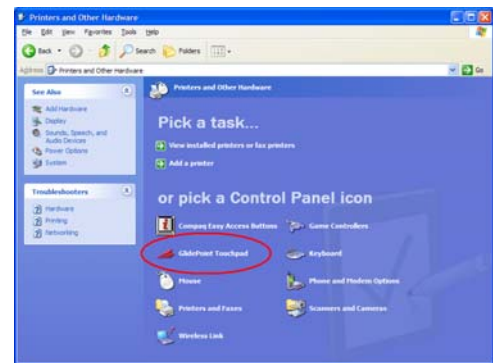
The GlidePoint Control Center can be accessed through the start menu by going to:
Start > (All) Programs > GlidePoint > Glidepoint Control Center

To customize settings on a Macintosh® for your Cirque Easy Cat®, go to:
Apple menu > Control Panel > Mouse.

You can also access it through the Control Panel as displayed to the right. (Refer to your Microsoft documentation for information on accessing Control Panel for your version of Windows).

Please Note: These instructions only apply for Windows 2000/XP.

The help system in the GlidePoint Control Center contains details and instructions for each option.



6.0 CUSTOMER SERVICE

TROUBLESHOOTING

Your Cirque GlidePoint® touchpad should work immediately when connected to your computer. If you have trouble:

- Check all connections to be sure they are secured to the correct ports and then restart the computer.
- Check Questions and Answers at www.cirque.com.
- Check the following list of frequently asked questions to see if your questions can be easily answered.
- Should you need additional help, call Cirque’s toll-free technical support at 1-800-GLIDE-75. Support hours are Monday through Friday 8:00 am – 4:00 pm MST.

FREQUENTLY ASKED QUESTIONS

What if I have trouble tapping or dragging on the touchpad?

If you have difficulties clicking or using highlight operations by tapping on the touchpad's surface:

- A light, quick tap will work best. The touchpad does not require pressure, and hard taps may actually slow your typing.

What if using the touchpad is causing discomfort in my hand or wrist?

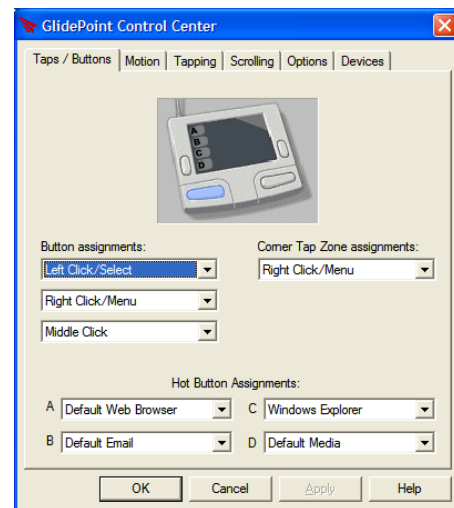
If you experience discomfort while using your touchpad:

- Try to relax your hand while pointing and tapping. Arching or flexing your hand over the touchpad will cause unnecessary strain.
- Your touchpad responds to the lightest touch, so you can use your index finger, your middle finger, or even your thumb to point and tap. If you find it uncomfortable to reach toward the device on your desktop, hold it in your other hand or on your lap.

How can I customize my touchpad settings?

The Cirque GlidePoint Control Center is complete with context sensitive help.

- You must install the Cirque GlidePoint® software driver in order to customize your touchpad features. (Refer to “*Installing your Cirque GlidePoint® driver software*” on page 2)
- To access the Cirque GlidePoint Control Center go to:
Start > (All) Programs > GlidePoint > Glidepoint Control Center.
- Once inside the GlidePoint Control Center you will click on the appropriate tab that matches the features you want to customize.
- Click on the help button on any tab to get information on customizing those features.



CUSTOMER SERVICE ASSISTANCE

To learn more about operating your Cirque GlidePoint® touchpad or if you need further assistance, contact Cirque at:

- Web site: www.cirque.com
- E-mail address: gp_support@cirque.com (please use a return e-mail address)
- Toll-free support line: 1-800-GLIDE-75 (direct line 801-467-1100) Monday through Friday 8:00 am – 4:00 pm MST.
- Fax line: 801-467-0208

NO RISK 30-DAY TRIAL

We thank you for choosing a Cirque product. We hope you will find that gliding your finger across the touchpad is truly a more natural way to operate your computer. Should you encounter any problems, please contact us and let us help you. If you are not completely satisfied, our support representatives are ready to help you with your problem. We will do our best to resolve the issue. Please keep a copy of your dated sales receipt.

WARRANTY INFORMATION

Cirque GlidePoint® touchpads are warranted to be free from failure due to defects in material and workmanship for three (3) year after the original date of purchase. Warranty is offered to original purchaser only. Please retain your proof of purchase, which will be required for future warranty claims. For three (3) year from the date of purchase, Cirque will, at its sole option, replace or repair at no charge the product, which, in its opinion, is defective. If a defective product has been modified or altered in any way, the plastic enclosure has been opened, or the failure is the result of misuse, abuse, accident, or misapplication, Cirque has no obligation to repair or replace the product.

Customer is responsible for packaging and freight to ship a defective product to Cirque. Cirque is responsible for charges to ship the repaired or replacement product. In the case of charges for which customer is liable, the replacement product will be sent C.O.D. Customer must obtain a Return Merchandise Authorization (RMA) number from Cirque's Customer Service department at 801-467-1100. This RMA number should be displayed prominently on the outside of the returned package and on the accompanying package list. Cirque is not responsible for packages returned without an RMA number. Warranty claims may not be honored without proof of purchase.

THE WARRANTIES OUTLINED IN THIS AGREEMENT REPLACE ALL OTHER WARRANTIES. CIRQUE EXPRESSLY DISCLAIMS ALL OTHER WARRANTIES, INCLUDING BUT NOT LIMITED TO THE IMPLIED WARRANTIES OF MERCHANTABILITY AND FITNESS FOR A PARTICULAR PURPOSE AND NON-INFRINGEMENT OF THIRD-PARTY RIGHTS WITH RESPECT TO THE DOCUMENTATION, SOFTWARE AND HARDWARE. NO CIRQUE DEALER, AGENT OR EMPLOYEE IS AUTHORIZED TO MAKE ANY MODIFICATION, EXTENSION OR SUBSTITUTION PRODUCTS OR SERVICES, LOST PROFITS, LOSS OF INFORMATION OR DATA, OR ANY OTHER SPECIAL, INDIRECT, CONSEQUENTIAL, OR INCIDENTAL DAMAGES ARISING IN ANY WAY OUT OF THE SALE OF, USE OF, OR INABILITY TO USE ANY CIRQUE PRODUCT OR SERVICE, EVEN IF CIRQUE HAS BEEN ADVISED OF THE POSSIBILITY OF SUCH DAMAGE. IN NO CASE SHALL CIRQUE'S LIABILITY EXCEED THE ACTUAL MONEY PAID FOR THE PRODUCTS AT ISSUE. HARDWARE, SOFTWARE, AND ACCOMPANYING WRITTEN MATERIALS ARE PROVIDED WITHOUT WARRANTY OF ANY KIND, INCLUDING THE IMPLIED WARRANTIES OF MERCHANTABILITY AND FITNESS FOR A SPECIFIC PURPOSE, EVEN IF CIRQUE HAS BEEN ADVISED OF THAT PURPOSE. IN NO EVENT WILL CIRQUE BE LIABLE FOR ANY DIRECT, INDIRECT, CONSEQUENTIAL, OR INCIDENTAL DAMAGES ARISING FROM THE USE OF OR INABILITY TO USE SUCH PRODUCT, EVEN IF CIRQUE HAS BEEN ADVISED OF THE POSSIBILITY OF SUCH DAMAGES.

FCC REGULATORY NOTICE

This device complies and Part 15 of the FCC Rules. Operation is subject to the following two conditions: (1) this device may not cause harmful interference, and (2) this device must accept any interference received, including interference that may cause undesired operation. *Warning:* Changes or modifications to this unit not expressly approved by the party responsible for compliance could void the user's authority to operate this equipment.

Note: This equipment has been tested and found to comply with the limits for a class B digital device, pursuant to Part 15 of the FCC Rules. These limits are designed to provide reasonable protection against harmful interference in a residential installation. This equipment generates, uses, and can radiate frequency energy, and, if not installed and used in accordance with the instructions, may cause harmful interference to radio communications. However, there is no guarantee that interference will not occur in a particular installation. If this equipment does cause harmful interference to radio or television reception, which can be determined by turning equipment off and on, the user is encouraged to try to correct the interference by one or more of the following measures:

- Reorient or relocate the receiving antenna.
- Increase the separation between the equipment and receiver.
- Connect the equipment into an outlet on a circuit different from that which the receiver is connected.

www.cirque.com

Installation Guide ©2006-2009 by Cirque Corporation

The contents of this manual are not intended to and do not constitute a warranty of any sort. Cirque Corporation specifically disclaims any implied warranties of merchantability or fitness or any particular purpose resulting from this manual. Cirque Corporation reserves the right to revise and make changes to this manual (and to the Cirque GlidePoint® product and software) from time to time without obligation to notify any person of, or to provide a person with, such revisions or changes.

©Cirque Corporation 2009. All rights reserved. Cirque, GlidePoint®, Cirque Smart Cat PRO®, Cirque Smart Cat® and Cirque Easy Cat® are registered trademarks of Cirque Corporation. All other registered trademarks are the sole property of their respective owner. Any unauthorized copying, duplicating, or other reproduction of the contents hereof is prohibited without written consent from Cirque Corporation. The products identified as Windows® 95, 98, ME, 2000, XP and Vista are manufactured by Microsoft® and not by Cirque.